

L
A
S
A
L
L
E



David Wallace, LCSW-R
LaSalle School, Albany, NY



ACEs = ADVERSE CHILDHOOD EXPERIENCES

The three types of ACEs include

ABUSE



Physical



Emotional



Sexual

NEGLECT



Physical



Emotional

HOUSEHOLD DYSFUNCTION



Mental Illness



Mother treated violently



Divorce



Incarcerated Relative



Substance Abuse

ACES can have lasting effects on....



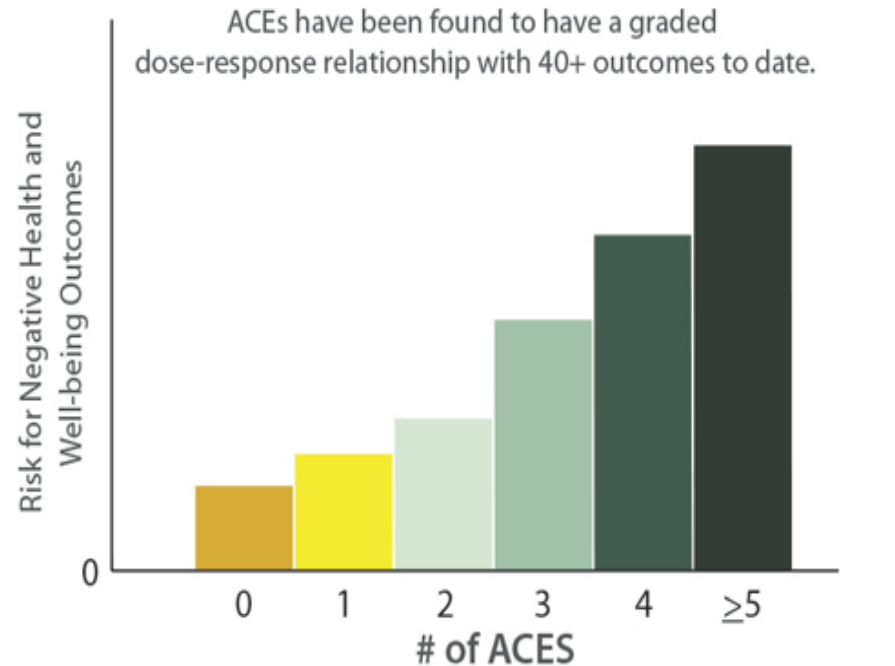
Health (obesity, diabetes, depression, suicide attempts, STDs, heart disease, cancer, stroke, COPD, broken bones)



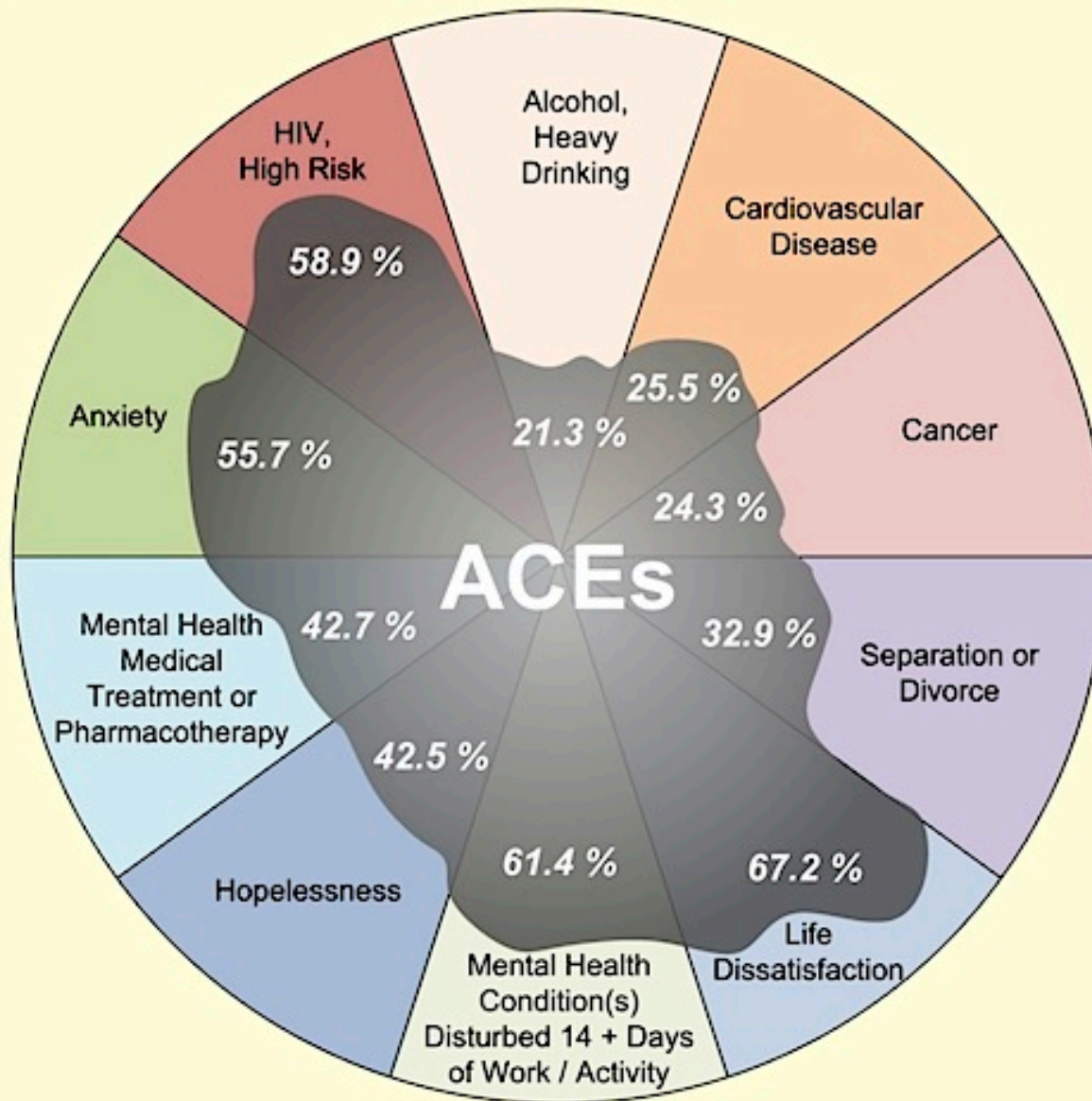
Behaviors (smoking, alcoholism, drug use)



Life Potential (graduation rates, academic achievement, lost time from work)



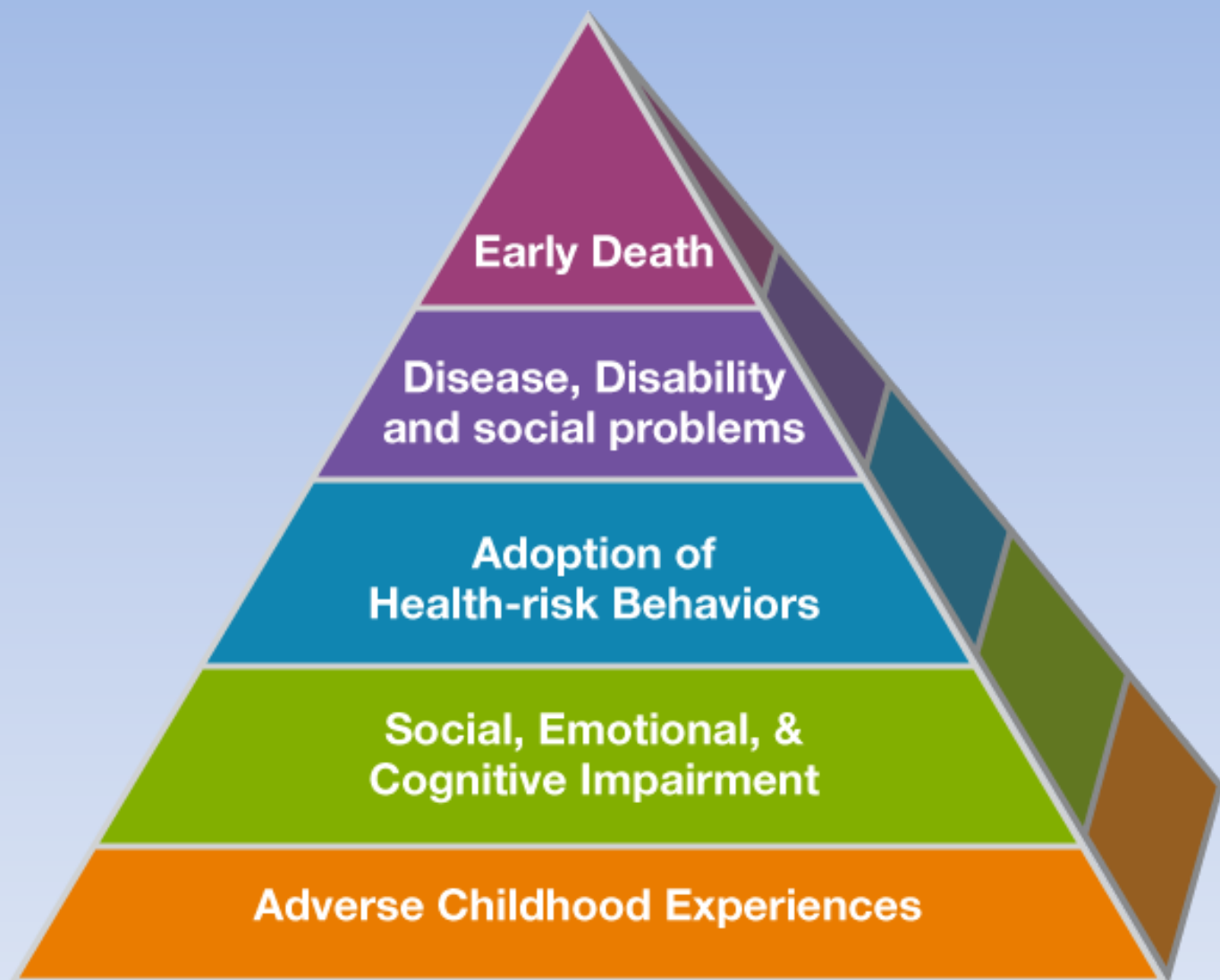
*This pattern holds for the 40+ outcomes, but the exact risk values vary depending on the outcome.



Death



Birth



Early Death

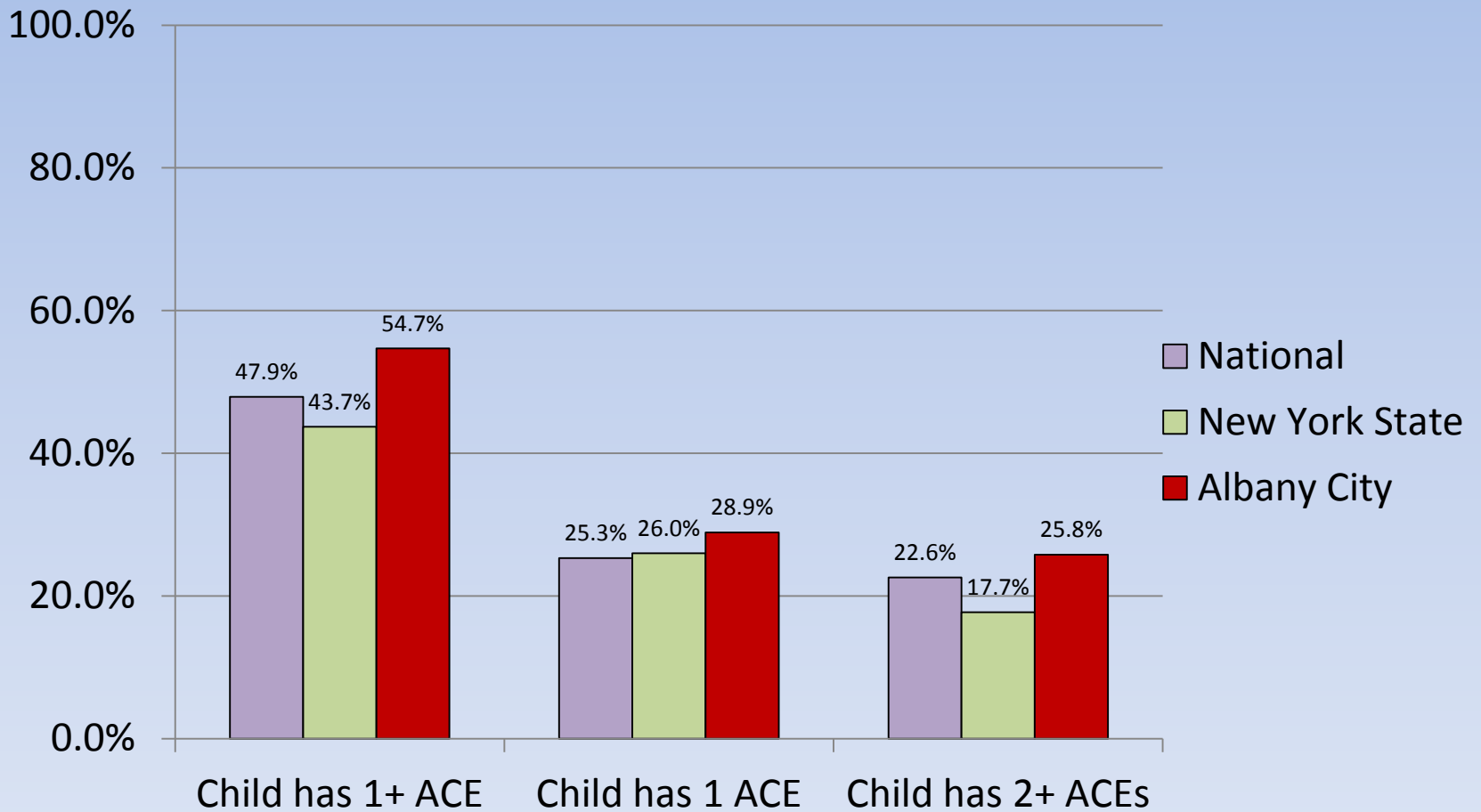
**Disease, Disability
and social problems**

**Adoption of
Health-risk Behaviors**

**Social, Emotional, &
Cognitive Impairment**

Adverse Childhood Experiences

ACE Comparison-City of Albany



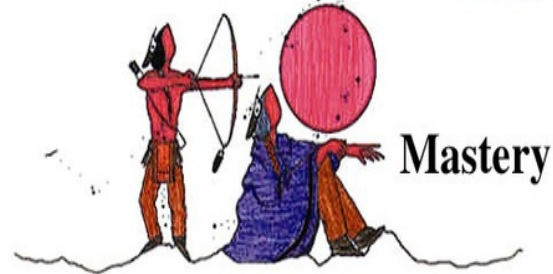
Generosity



Independence

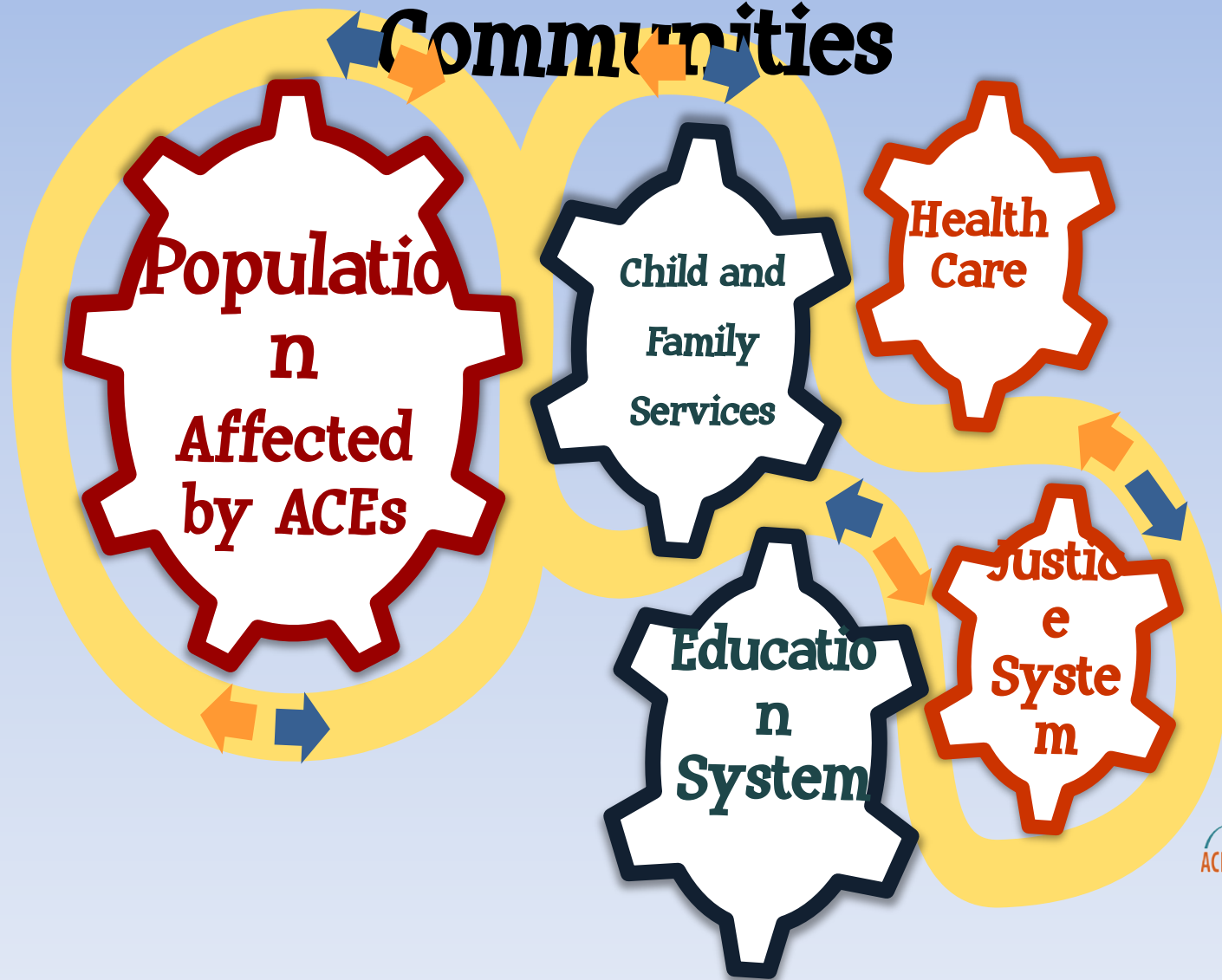


Belonging



Mastery

Building Self-Healing Communities







Albany County Department of Health
Albany County Sheriff's Department
Albany Police Department
Albany Poverty Resources
Albany VA Medical Center
Albany Medical Center
Alliance for Better Health Care
Alliance for Positive Health
Berkshire Farm
Bethesda House
Capital District Physicians' Health Plan (CDPHP)
Captain Youth and Family Services
Center for Disability Services (CFDS)
Community Care Behavioral Health
Community Hospice
Community Maternity Services
Deivery System Reform Incentive

Payment (DSRIP) Program
Homeless and Travelers' Aid Society
Interfaith Partnership for the Homeless
LaSalle School
Mental Health Association of New York State (MHANYS)
New York State United Teachers (NYSUT)
NYS Council on Children and Families (CCF)
NYS Department of Health (DOH)
Parsons Child and Family Center/Northeast Parent and Child Society (Northern Rivers)
Prevent Child Abuse New York (PCANY)
Senior Hope Counseling, Inc.
Sexual Assault & Crime Victims Assistance Program at Samaritan Hospital
Soldiers' Hope/Orenda Healing Arts

St. Anne Institute
St. Catherine's Center for Children
The Institute for Family Health
Trinity Alliance
Troy Housing Authority
UAAlbany School of Social Welfare
United Way
US Committee for Refugees & Immigrants
Vanderheyden
Veterans Health Administration
Welcoming Adolescents in Transition (WAIT) House
Welfare Research, Inc